



*College Park designs and manufactures a full line of anatomically correct, custom built prosthetic solutions. College Park is ISO 13485 certified with an extensive focus on quality testing, and proudly sources and produces all products entirely in the USA. With precise engineering and quality manufacturing, College Park is committed to innovating human locomotion solutions for users all over the world.*



**college park**

TECHNOLOGY *for the* HUMAN RACE

800.728.7950 | 586.294.7950 | [www.college-park.com](http://www.college-park.com)



493 LIT BRO AC 171205

©2018, College Park Industries, Inc. Truststep, and Enviroshell are registered trademarks of College Park Industries, Inc.







The Accent provides 2" (5 cm) of heel height adjustment through a simple push of a button. The foot comes with a contoured, soft shin fairing that locks into the shell and prevents cosmetic buckling when the foot is adjusted at various heel heights. The Accent provides a service-free option for individuals who desire a cosmetically appealing foot.



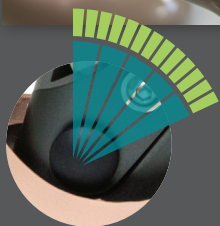
### COSMETIC OPTIONS

The Accent Enviroshell® comes with a sandal toe feature and a narrow or wide width option. A soft, contoured ankle fairing is included to complete the look.



### DYNAMIC SHANK OPTION

The dynamic shank version provides additional movement and flexibility. A cutting jig is included, making the pylon simple to fit and cut.



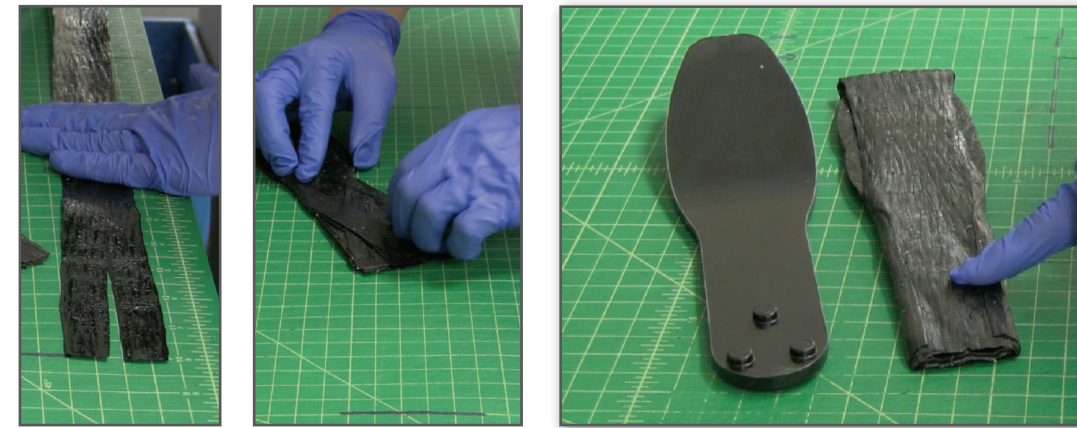
■ Accent's increments  
■ Competition's increments

### MORE RANGE THAN EVER

The Accent has 13 increments of adjustment that lock securely into place, unlike some other heel height adjustment feet which only have 5. With an easy-to-adjust button located in the ankle, the foot accommodates a wide range of shoes including flats, cowboy boots and high-heels.



## INTELLIWEAVE® COMPOSITE



College Park's proprietary Intelliweave® composite technology brings the maximum amount of strength and flexibility. The fibers are woven by hand in a 3D pattern for ultimate durability and precision gait matching.



*"The Accent gives me that freedom back and having a shoe choice makes me feel feminine and confident. I love dressing up and I own it when I walk into a room now!"*  
– Jen, Accent user  
See more at [www.college-park.com/testimonials](http://www.college-park.com/testimonials)

## TECHNICAL SPECIFICATIONS

### FUNCTION

Adjustable Heel

### MOUNTING

Endo (IP)  
D.Pylon (DP)

### SIZES

21-28 cm

### WEIGHT LIMIT

21-24 cm	220 lbs (100kg)
25-28 cm	250 lbs (113 kg)

### CLEARANCE

3.3-3.9 in (IP) (8.5-9.9 cm)
7.8-8.5 IN (DP) 19.8-21.5 cm

### WEIGHT\*

608g (IP)  
761g (DP)

### WARRANTY

2 years

### L CODES\*\*

L5981 + L5986 + L5990 (IP)  
L5980 + L5986 + L5990 (DP)

### IMPACT LEVEL

L M  
**ENVIROHELL®†**

C B  
narrow & wide

\*26 cm model, including Enviroshell. \*\*The listing of codes with these products should not be construed as a guarantee for coverage or payment. Ultimate responsibility for the coding of services/products rests with the individual practitioner.  
†Caucasian or Brown.

